

## IN MEMORY

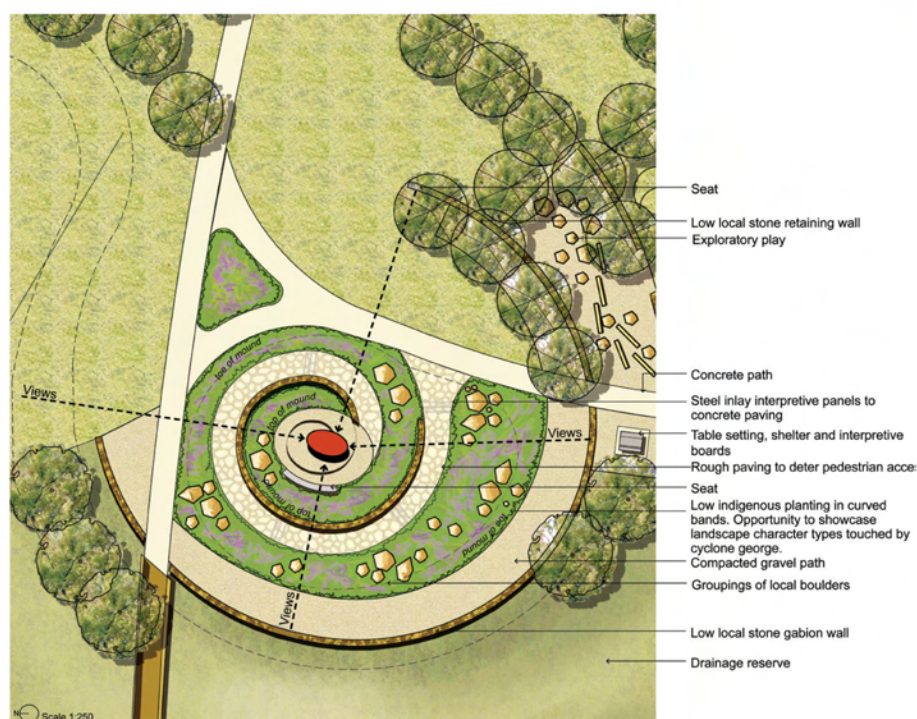
In memory of Debra Till and Craig Raabe, the two workers who tragically lost their lives in the ferocity of Cyclone George, Fortescue has commissioned acclaimed Western Australian sculptor, Ron Gomboc, to create a steel sculpture to be placed at South Hedland.

The sculpture, due for installation by the end of 2008, will be located in DeMarchi Park in a new public open space being created as part of a program to revitalise the town of South Hedland.

The 12-metre sculpture will be the feature of a water-wise garden that showcases Pilbara plants, geology and landscapes. The park design is by mnla landscape architects.

***The design of “Northern Spirits” reflects two concepts: an organic shape to show new growth and it has a twisted sense, because after a cyclone nothing is straight anymore. But the most important feature is the central void that reflects the loss of Debra and Craig.***

**Ron Gomboc,  
sculpture designer**



## AWARDS

To honour Debra and Craig, Fortescue has introduced two new staff awards: The *Debra Till award for teamwork and leadership* and the *Craig Raabe award for excellence in the field*.



A scale model of the sculpture, 'Northern Spirits' that will be installed at the end of 2008 in memory of the loss of lives and devastation caused by Cyclone George.



Cloudbreak takes shape.

