

30TH Annual Exhibition

SCULPTURE SURVEY 2013

2 – 20 June 2013



ACKNOWLEDGEMENTS

Distinguished invited Artists

Keizo Ushio Koichi Ogino	Japan Haruyuki Uchida Yoshio Nitta	Mitsuo Takeuchi Yuko Kawaguchi
Sang-Wook Oh Sung-Jae Jang	South Korea Se-Moon Oh Je-Sung Oh	Ok-Jai Seo Young-Ho Joo
Dr Riyadh Matwq Jean-Pierre Rives France	United Arab Emirates Aws Al Jead	Muatasim Al Kubaisy Peter Lundberg USA
Geoffrey Bartlett Vic Bruce Slatter WA Denise Pepper WA	Australia Michael Le Grand NSW Nien Schwarz WA R.M. Gomboc WA	Phil Spelman ACT Ayad Alqaraghholli WA

Students from

Curtin University of Technology Central Institute of Technology	Edith Cowan University Polytechnic West - Midland
Dr Nien Schwarz – Senior Lecturer	Norton Flavell Technician, Edith Cowan University
Bruce Slatter – Coordinator of Sculpture	
Shannon Lyons, Therese Howard, Joanne Richardson, Mark Parfitt lecturers	
John Hutchinson, Ben Kovacsy, Patrick Miller Technicians. Curtin University	
Bela Kotai – Lecturer Central Institute of Technology	
Andrea Vinkovic – Lecturer Polytechnic West – Midland Campus	

Dr Nien Schwarz Foreword
R.M. Gomboc Photographs

Catalogue published by
Gomboc Gallery Sculpture Park
50 James Road Middle Swan 6056
Western Australia
Tel: (08) 9274 3996
Email: rm@gomboc-gallery.com.au
www.gomboc-gallery.com.au

National Library of Australia Cataloguing in Publication Data
Sculpture Survey 2013
Bibliography IBSN 1 875458 00 x
Copyright Gomboc Gallery and participating artists

Printed by Pilpel Printing Company
Sculpture Survey 2013 totally funded and curated by R.M. & T.C. Gomboc

FOREWORD

Gomboc Gallery Sculpture Survey 30th Annual Exhibition, 2013

What next? It's a question Ron Gomboc has repeatedly asked himself ever since completing his studies in sculpture at Claremont School of Art. The question emerged again in 1975, when he graduated from the bronze casting course at Perth Technical College. Although Ron was quick to establish his own studio here in Middle Swan, his perspective, as shared by many artists of his generation, was that Western Australia offered sculptors few prospects for exhibiting. Ron felt an acute need to do something about this and his zeal for supporting exhibition opportunities for sculptors both here in WA and overseas has since continued unabated.

In 1983, in consultation with other artists, many of whom are now prominent in the field of contemporary Australian sculpture, Ron Gomboc questioned whether it was worth organising an annual group exhibition. With most artists in agreement, he initiated an annual survey of sculpture.

The first Sculpture Survey materialised in 1984. Initially artists were selected, but over three decades the Survey evolved to include open entry for established and newly graduated sculptors and, more recently, tertiary students studying sculpture. It has been a financially challenging but rewarding quest. To date 2,864 artists and students have exhibited in the Sculpture Survey, including numerous established overseas artists. For many local students, the Survey is the first exhibition in which they have participated, and the first entry on their artist CV. Based on the experiences gained here, several graduates have gone on to apply to Sculpture by the Sea, Sculpture@Bathers, and to teach sculpture in secondary schools.

Ron Gomboc is clearly passionate about promoting sculpture and is particularly proud of facilitating three decades of "cultural exchanges". In fact, Ron and Terrie Gomboc have self-funded numerous opportunities for WA artists to exhibit in Asia and have personally hosted residencies for invited artists from Singapore, Indonesia, China, Hong Kong, South Korea, New Caledonia, Japan, France, Italy, Slovenia, Germany, Austria, England, and the USA to work in Ron's workshop. For nine years, the Gombocs have also helped support the initiatives of interstate artists associated with Sculpture by the Sea.

For those of you who are not overly familiar with sculpture, consider a moment the challenges to succeed. Unlike many other visual arts disciplines, sculpture requires significant investment in equipment, space, expensive and bulky media, and significant understanding of chemistry and physics to create form and surface and to maintain structural integrity. Then there is public liability to consider, the transport of works, the impact of weather on outdoor works, and a potentially unruly public. Please congratulate Ron and Terrie Gomboc for their long-term vision and commitment to facilitating and furthering traditional and contemporary sculpture in Australia, Asia and beyond. Today, please also welcome Dr Stefano Carboni, Director of the Art Gallery of Western Australia, who officially opens this very special 30th Annual Sculpture Survey.

So please, grab a map and enjoy locating outdoor works by students from Edith Cowan University, Curtin University, Polytechnic West–Midland Campus, and Central Institute of Technology. Inside, enjoy an equally diverse range of sculptures by the following distinguished invited artists: Keizo Ushio, Haruyuki Uchida, Mitsuo Takeuchi, Koichi Ogino, Yoshio Nitta and Yuko Kawaguchi from Japan; Sang-Wook Oh, Se-Moon Oh, Ok-Jai Seo, Sung-Jae Jang, Je-Sung Oh, and Young-Ho Joo from South Korea; Dr. Riyadh Matwq, Aws Al Jead, and Muatasim Al Kubaisy from United Arab Emirates; Jean Pierre Rives from France; Peter Lundberg from USA; and from Australia, Ayad Alqaraghollu, Geoffrey Bartlett, Michael Le Grand, Denise Pepper, Nien Schwarz, Bruce Slatter, Phil Spelman, and Ron Gomboc.

Dr Nien Schwarz is an artist and Senior Lecturer in the School of Communications and Arts at Edith Cowan University.

Distinguished invited Artists

Japan

Keizo Ushio
Mitsuo Takeuchi
Yoshio Nitta
Haruyuki Uchida
Koichi Ogino
Yuko Kawaguchi

South Korea

Sang-Wook Oh
Ok-Jai Seo
Je-Sung Oh
Se-Moon Oh
Sung-Jae Jang
Young-Ho Joo

United Arab Emirates

Dr Riyadh Matwq
Muatasim Al Kubaisy
Aws Al Jead

Jean-Pierre Rives France

Peter Lundberg USA

Australia

Michael LeGrand NSW

Phil Spelman ACT

Nien Schwarz WA

Denise Pepper WA

Geoffrey Bartlett Vic

Bruce Slatter WA

Ayad Alqaraghholli WA

R.M. Gomboc WA

Participating Campuses

Edith Cowan University
Curtin University of Technology
Polytechnic West – Midland Campus
Central Institute of Technology



Keizo Ushio

Born 1956 in Fukusaki Town, Hyogo Prefecture, Japan

Selected Solo Exhibitions

2011 Art Museum Edsvik Konsthall, Stockholm, Sweden

2008 Robert Steele Gallery, New York, USA

2005 Michael Reid Gallery, Sydney, Australia

Urmont, Stein, Holland

2000 Daimaru Kobe, Hyogo, Japan

Reykjavik, Iceland

Selected Group Exhibitions

2005 – 2013 Sculpture by the Sea, Bondi NSW, and Cottesloe WA, Australia

1999 – 2012 Sculpture by the Sea Bondi NSW, Australia

2008 Artist in residence, Gomboc Gallery Sculpture Park WA, Australia.

Artist in residence, Museum of Asago Art Village, Asago, Japan.



Koichi Ogino

Born 1954 in Niigata, Japan

2009 Artist in Residence Gomboc Gallery Sculpture Park. Asago Museum and Sculpture Park/Gomboc Gallery Sculpture Park Cultural Exchange.

2007 The 22nd Exhibition of Contemporary Japanese Sculpture.

Sculpture by the Sea Cottesloe 2007,10,11,12

2006 Solo Exhibition in Aomori

Stone sculpture Symposium in Kuzutuka, Japan

2005 Stone Sculpture Symposium in OGA, Japan organizer.

2004 Stone Sculpture Symposium in Ikawa, Japan Organizer.

Sculpture by the Sea, Bondi 2004 – 6,9,11,13

2000 Awarded the Grand Prize at Sakura no Mori Sculpture Competition Echigo Tumari Art Triennial, Japan.

1996 Awarded the Grand Prize at 8th Kobe Figurative Sculpture Exhibition



Haruyuki Uchida

Renowned Japanese Sculptor in the field of kinetic art.

Exhibitions

Numerous group and solo exhibitions in throughout Japan.

Awards & Achievements

2006 Transfield Holdings Invited Artist to Sculpture by the Sea, Bondi.

1998 29th Teijirou Nakahara Prize

1984 Grand Prize at the 15th International Art Exhibition of Japan

1994 Prize from The National Museum of Contemporary Art,

Korea at the International Symposium of Open-Air Sculpture in Pusan

1997 Grand Prize at the 17th Exhibition of Contemporary Japanese Sculpture

Selected Collections

Pusan Olympic Park;

Taipei Fine Arts Festival;

The National Museum of Contemporary Art, Korea.



Mitsuo Takeuchi

Born in Tokyo, Japan 1948

Kyoto Municipal University of Fine Arts BFA 1972

Kyoto Municipal University of Fine Arts MFA 1974

Grand Prize Sanda International Sculpture Exhibition.

Kyoto Arts and Culture Award.

Sculpture by the Sea Bondi 2004-2013.

Sculpture by the Sea Cottesloe 2005,2012,2013.

Selected Collections

Kyoto (Kyoto Prefectural General Museum, Kyoto Seminar House)

Ube (symbol load); Yokohama (JR Konandai Promenade);

Takami floral Town (Osaka); ORC200 (Osaka);

Takatsuki Abuyama Complex (Takatsuki); Sanda (General Welfare Health Center);

Shimonoseki City Art Museum; Japanese flower garden (Akita Ikawa town);

Kobe (Verde Myodani); Holmes a Court Collection

WA. AUSTRALIA;

East Link Vic. AUSTRALIA



Yoshio Nitta

1969 Born in Aichi Prefecture in JAPAN
1992 Graduated from Kyoto City University of Arts,
Fine Arts Department
1994 Finished Kyoto City University of Arts Graduate
School of Arts, Sculpture course
Solo Exhibitions
Space HaaM, Seoul / South Korea 2010
Kaede Gallery Osaka 2008, 2005, 2002, 2000, 1997,
TeNBA-A Gallery Osaka 2000,
Co-op inn Kyoto Kyoto 1997
Art Space NIJI Kyoto 1997, 1995, 1993,
Participated in numerous Exhibitions and Activities
in Japan, South Korea, UAE, Denmark and Australia
including: Sculpture by the Sea Bondi NSW 2004,
2006, 2007, 2009, 2011,
Sculpture by the Sea Cottesloe WA 2005, 2006,
2007, 2008, 2011, 2012
Sculpture by the Sea Aarhus Denmark 2009
Gonboc Gallery Sculpture Survey 2010
Collections: Town of Cottesloe, WA,
BHP, Margaret River, WA
Mornington Peninsura, VIC.
Denmark, South Korea, Hong Kong and Japan



Yuko Kawaguchi

Freelance artist.
Born in Ichikawa Chiba Japan.
Graduated Joshibi University of Art and Design.
Solo exhibition 10 times(Tokyo Japan, Amman
Jordan)
Prize-Asia Modern Art Exhibition prize of grand
prix, prize of Asia Airline, prize of Fuji Television and
so on.
Public Collection-MEIJII University, Oketo Poppo
Art Museum(Japan), Jordan National Art Museum,
AlQasr Matropole Hotel(Jordan), Toyota Tsusho
Bangkok(Thailand)



Sang-Wook Oh

1988 - 93 Ecole National Superieure des Beaux-Arts de Paris (France)

1977 - 84 BFA & MFA with Sculpture in Hongik University (Seoul)

1987- 11 12 times Solo Shows (Seoul, Mannheim, Paris, Numea, Busan)

GROUP EXHIBITIONS

2012 The 1st international Outdoor Sculpture Symposium, Qingdao, China

2012 K-Sculpture in Italy , Pietrsanta, Italy

2011 The 1st "Liu Kaiqu Award " International Sculpture Exhibition, Wuhu, China

2008 Asan International Outdoor Sculpture Symposium, Asan City, Korea

Present

Professor of Dept. Sculpture, Hong-Ik University, Seoul, Korea

Director of Mooyi Sculpture Park, Korea

Director of Qingdao Seoul Sculpture Park, China



Young-Ho Joo

Graduate Sculpture Department Art College, Changwon University

Current Graduate student of Art Department, Changwon University

Solo Exhibitions in 2006 , 2007

-Awards-

1997-Grand prize in Art Exhibition of Gyeongsang-Nam-Do (jinju)

1997-Honorary Mention in Grand Art Exhibition of Korean (Gwacheon)

1998-The first prize in Grand Art Exhibition Changwon (Changwon)

2003-Honorary Mention in Art fair Field Sculpture Hongik (jochiwon)

-Exhibition Career-

1995~2013-Group exhibition 150 times



Sung-Jae Jang

Received B.F.A from Seowon University

Received M.F.A from Sung-shin University Graduate School

Solo Exhibitions

2012 4th Solo Exhibition at Art Space H

2008 3th Solo Exhibition at Cube Space

2003 2nd Invited Solo Exhibition at Songeun Gallery
Group Exhibitions

2011 'Story of Stone - Charm of stone sculpture' at Art Space H

2010 'STONE ROAD' at the Ueno Royal Museum in Tokyo

2009 Goyang Sculpture Association Exhibition at Ilsan Lake Park

Lecture

Joongang University Sculpture department



Ok-Jai Seo

1993 M.F.A., Graduate School of Arts Plastics, University of Paris VIII, Paris, France

1987 M.F.A., Graduate School of Fine Arts, Hongik University, Seoul, Korea

1985 B.F.A., Dept. of Sculpture, College of Fine Arts, Hongik University, Seoul

SOLO EXHIBITION

2011 The 4th solo Exhibition, Insa Gallery , Seoul

2007 The 3th solo Exhibition, MANIF , Art Hall , Seoul

2005 The 2nd solo Exhibition, Insa Gallery , Seoul

2001 The 1st solo Exhibition, Insa Gallery , Seoul

GROUP EXHIBITIONS

2011 Goyang International Outdoor Sculpture Symposium, Goyang City

2010 Asan International Outdoor Sculpture Symposium, Asan City

Awards

2010 Grand Prize in Goyang Outdoor Sculpture Exhibition

2008 Special Prize in the 19th MBC Figurative Sculpture Contest



Se-moon Oh

Received B.F.A and M.F.A

from Sculpture department, the college of fine arts,
Hongik University

Solo Exhibitions in 1999, 2002, 2006 and 2012

Other Exhibitions

2010 Asan International Sculpture Symposium

2008 KIAF 2008

2005 Goyang International Sculpture Symposium

2004 Shanghai 2004

2000 The 5th Iota Asian Sculpture Exhibition (Grand
Award)

Joined about 80 group exhibitions



Je-Sung Oh

1987 Born in Seoul in Korea

2012 BFA in sculpture, Kookmin university Seoul,
Korea

Group Exhibitions

2012 "Wish List", Sungkok art museum, Seoul, Korea

2012 "The prospect of diversification", Chuncheon
museum, Gangwon

2011 "Contemporary new art star festival", Seoul
arts center Hangaram art museum, Seoul, Korea
Awarded prize

2011 Special prize to the Crown-Haitai "dolls and
sculpture contest", Seoul, Korea



Dr. Riyadh Matwq

Born in Baghdad

Qualifications:

Bachelor in ceramic, Academy of Fine Arts

University of Baghdad –1979 Master of ceramic,

Academy of Fine Arts – University of Baghdad

1989. Doctorate in ceramic, Academy of Fine Arts –

University of Baghdad 1996.

Recently teaching ceramic s in Sharjah Arts Institute

since 1- 12- 2000 Teacher in college of Arts and

Architecture- University of Darna – Libya, teaching

ceramic and mural photography since 1997 - 2000.

Teacher in College of Fine arts – University of

Baghdad – teaching ceramic, murals , glassing and

ceramic sculpture since 1990 – 1997.

Teacher in the Institute of Fine Arts – Baghdad

– teaching practical ceramic, murals and the

techniques of glassing since 1979 – 1990.

Head of the department of sculpture in the Institute

of Fine Arts – Baghdad – 1983 – 1986.

Head assistant of the department of sculpture –

College of Architecture and Arts- University of Darna

Libya 1999- 2000



Aws Al Jead

Born Baghdad 1972

Received Diploma from Academy of occupations

and popular Arts 1991, Bachelor from College of

Fine Arts Ceramics Department 1994.

Memberof the Iraqi Artists Union, Iraqi Sculptors

Society, Artists Society in Al-Sharaja/UAE. Member

of International Committee Federation of Fine Arts.

Solo exhibitions Middle East and Abroad. Numerous

Group exhibitions of Arabian Culture in more than

20 countries including USA.

Completed numerous Public Commissions including

A monument in Saudi Arabia “Al-Khubar”

representing the Saudi Heritage.

Currently living and working in Al-Sharaja, UAE.



Muatasim Al Kubaisy

Solo Exhibitions 2008 Sharjah Gallery for Art; Dubai at XVA Hall. 2004 Gallery M in Paris

Group Exhibitions including 2007 Joint exhibition of group Iraqi artists (UNESCO) in Paris; National Gallery of Modern Art in Abu Dhabi; Joint exhibition of contemporary art in Dubai at XVA Hall; Iraqi contemporary art exhibition in Akad Baghdad Hall 2006 Iraqi Contemporary art in Damascus 2004 Exhibition "Greetings to Baghdad" at Hiwar Hall; Exhibition of the Association of Iraqi Artists in Syria; Exhibition on the trends of contemporary Iraqi art in Dubai. 2002 Baghdad International Biennial 2000 Joint exhibition in the Women's Dhabian Renaissance Association Abu Dhabi; 1999 – 2008 Dubai International Fair, Dubai World Trade centre. 1999 Heritage Impressions exhibition in Dubai and Joint exhibition in Cultural gallery of Awsha bint Hussain. 1992 – 1996 All exhibitions of the Association of Iraqi Artists. 1988 - 1996 Exhibitions of the Ministry of Culture and Information Participated in numerous workshops including restoration and molding of archaeological artworks for the staff at Fujairah Museum in 2000. Received Ishtar Award for young artists in Baghdad, 2005 and recipient of numerous certificates from the Ministry of Health of Dubai, Iraq's Ministry of Culture.

The participation of the artists from UAE has evolved from ongoing cultural exchange with International artists and Gomboc Gallery, following the Passage to Middle East exhibition at Four Walls Gallery in Dubai February 2013 which included Artists from Japan, UAE and Australia.



Jean-Pierre Rives

Regarded as one of Europe's best contemporary sculptors, he was the first sculptor to exhibit in the Garden of Luxembourg, Paris since Rodin. He has exhibited in France and internationally since 1990. Jean Pierre has exhibited in a number of Sculpture by the Sea Exhibitions in Bondi New South Wales and Cottesloe. As a Distinguished Invited Artist, Jean-Pierre was Sculptor in Residence at the Gomboc Gallery Sculpture Survey Exhibition 2007 for the first time and continued exhibiting with Gomboc Gallery. This association continues with ongoing cultural exchanges between France and Australia co-ordinated by Jean-Pierre.

Jean-Pierre's work is found in numerous private and corporate collections throughout the world including Veolia, Cap Gemini, Schneider Electric, Axa Bouygues, Sanofi, and Cartier in France.

Public collections in Australia include ARTACT Collection for the Public, Canberra ACT. Numerous private collections including Gomboc Gallery Sculpture Park.

Peter Lundberg

Has been Artist in Residence at the Gomboc Gallery for two consecutive years 2012, 2013

Peter's large cast concrete sculptures were exhibited at Sculpture by the Sea Cottesloe

And have both been acquired into important collections. 2012 into Town of Cottesloe and the 2013 sculpture into a private collection.

Recent Awards: Balnaves Foundation Sculpture Prize, Australia 2012 Cottesloe Purchase Award; Australia 2012 Nord Art Award, Germany 2012;

Selected Collections

Royal Botanical Gardens, Sydney, Australia;

Grounds for Sculpture, NJ, USA; George Washington

Bridge, Port Authority of NY & NJ, USA; Senator Bill Carris, West Rutland, VT, USA;

Griffiss Sculpture Park, Rome, NY, USA;

Skidmore College, Saratoga Springs, NY, USA;

Cherokee Sculpture Park, Cashiers, NC, USA;

Chestnut Hill Sculpture Park, Philadelphia, PA, USA;

CT Sculpture Park, USA; Fort Tilden, Queens, NY,

USA; UNO, New Orleans, LA, USA;

Plattsburgh, NY, USA

Selected Exhibitions:

Damien Minton Gallery, Sydney, Australia. 2013

Gomboc Gallery, Perth, Australia. 2013

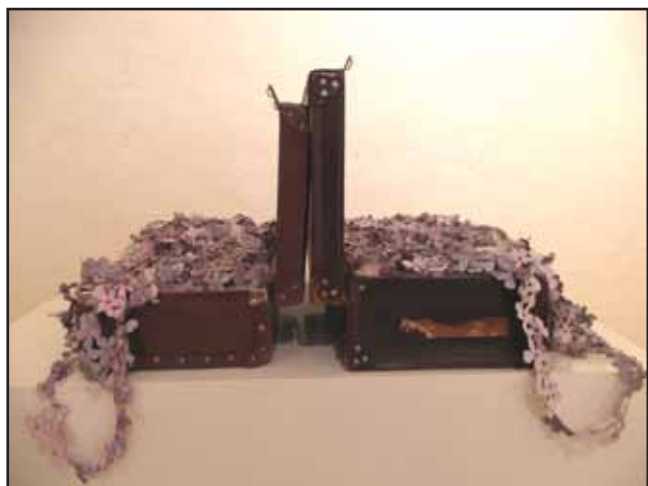
Red Gate Gallery, Beijing, China. 2013

Sculpture by the Sea. Cottesloe, Australia. 2012, 2013.

Nord Art, Büdelsdorf, Germany. 2010, 2011, 2012, 2013



Australia - Japan Cultural Exchange
between Gomboc Gallery and Symart. Invited
Western Australian participating sculptors
exhibition that was showcased in three galleries
in Japan. Choju Contemporary Art, Kaede Gallery
and Honen-in. Kyoto and Osaka.



Nien Schwarz



Ayad Al Qaraghalli



R.M. Gomboc



Denise Pepper



Bruce Slatter



Geoffrey Bartlett

Born Melbourne, Australia 1952

1973 Diploma of Fine Art (Sculpture) RMIT, Melbourne

1976 Postgraduate Diploma (Sculptural) RMIT

1985 Master of Fine Art (Hons), Columbia University, New York

Numerous Solo exhibitions since 1976.

Joint exhibitions with Augustine Dall'Ava and Anthony Prior 1975 – 1979. Participated in many group exhibitions. Selected Public Collections National Gallery of Australia; Victoria Arts Centre, Melbourne; National Gallery of Victoria; Newcastle Region Art Gallery; Art Gallery of New South Wales; Wagga Wagga Art Gallery; New Parliament House; Melbourne University; Geelong Art Gallery; RMIT University, Melbourne; Heide Museum of Modern Art; Deakin University, Melbourne; McClelland Gallery & Sculpture Park; Macquarie University, Sydney; Visual Arts Board, Australia Council; Australian National University, Canberra plus corporate and private collections nationally and internationally.

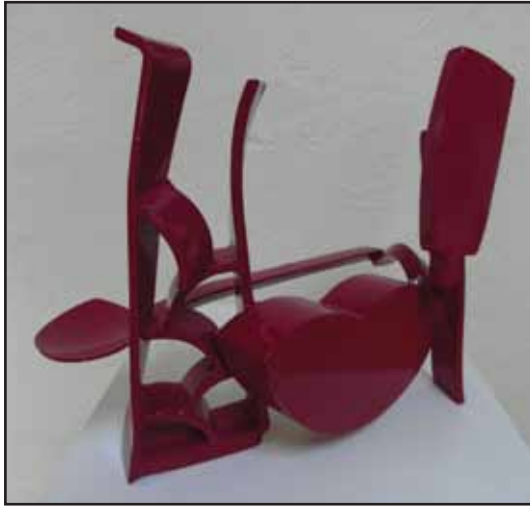


Michael Le Grand

Since graduating from the Victorian College of the Arts in 1974 Michael has worked in steel. Following further studies at St. Martin's School of Art, London, Michael was awarded an Australian National University Creative Arts Fellowship in 1978. He was a recipient of an Australia Council Travel Grant in 1975 and both the Capital Arts Patron's Fellowship and the actARTS Creative Arts Fellowships in 1997. Also that year, he was a Co-Winner of the Inaugural Sydney Water Sculpture Prize, Sculpture by the Sea, Bondi.

Michael has travelled widely and has participated in residencies and sculpture symposiums in Canada, U.S.A, Germany and Japan. He has had a number of solo exhibitions both nationally and internationally and participated in many major sculpture exhibitions including Sculpture by the Sea exhibitions Bondi, Aarhus Denmark and Cottesloe, WA., McClelland Sculpture Survey and Award 2003, 2007, 2010.

He is also represented in many private and public collections both here and overseas. Michael was awarded a 2010 Helen Lempriere Scholarship. In 2011 he had a retrospective exhibit at the Canberra Museum and Gallery



Phil Spelman

1987 Bachelor of Arts (visual) Sculpture Major, Canberra School of Art Australian National University; 1982 Certificate of Applied Arts Queensland College of Art.

Exhibited in numerous exhibitions since 2004.

Including SXS Bondi, Cottesloe, and Denmark.

Commissions include

Arrow International, Chisholm ACT;

ACT Cultural facilities Corporation,

Civic Square Canberra ACT; Public Arts London

circuit Canberra ACT;

Civil & Civic / Lend Lease, Woden Plaza Canberra;

Canberra Grammar, Red Hill Canberra ACT; Sydney

City Council, King Street Newtown NSW;

Williamson Group, Griffin Complex ACT; Corporate

Diagnostics, Manuka Canberra ACT; Capital

Development Authority

Public Collections include National Convention

Centre; ArtsACT; Kondouris Group; Canberra

Museum and Art Gallery; Queen Beatrix Collection;

Price Waterhouse; Canberra ACT.

The Lady Ethel Nock Sculpture Collection;

Bathurst Regional Gallery; New South Wales.

Private collections nationally and internationally.

CURTIN UNIVERSITY



First Year

1. Elizabeth Gomboc

The Balance of Dance

CURTIN UNIVERSITY



Jill O'Meehan *Hanging by a thread*

Second Year

- | | | |
|-----|--------------------|--|
| 2. | Phoebe Clarke | <i>Say dada for me loud</i> |
| 3. | Sophie Durand | <i>Structure and Suspensions</i> |
| 4. | Sophie Durand | <i>Points of Interest 1 - 23</i> |
| 5. | Carla Marinescu | <i>Consumers' Ignorance</i> |
| 6. | Carla Marinescu | <i>Bonobo</i> |
| 7. | Jill O'Meehan | <i>Hanging by a thread</i> |
| 8. | Jill O'Meehan | <i>Toxic march of the Processionary Caterpillars</i> |
| 9. | Tabitha Parlett | <i>Blunt Studies II</i> |
| 10. | Shaun Prior | <i>Pine Song</i> |
| 11. | Hannah Ranford and | |
| 12. | Jacob Wallace | <i>Long Journey and Weathered Faces</i> |



Holly O'Meehan *Eocrateaptor*

Third Year

- 12. Holly O'Meehan
- 13. Eugene Tang and Katherine Winslade

Eocrateaptor

Trash to treasures

EDITH COWAN UNIVERSITY



Ashleigh Eldridge *Home*

Second Year

14. Shannon Bowen
15. Jason Dirstein
16. Ashleigh Eldridge
17. Franco Iannantuoni
18. Laura Vermeulen

- Future*
Whispers
Home
Marked Presence
Nature's Performance

EDITH COWAN UNIVERSITY



Nina McKay *I dug a hole*

Third Year

- | | | |
|-----|-------------------|--------------------------------|
| 19. | Leah Allen-Ankins | <i>Mending Limbs</i> |
| 20. | Eden Stanley | <i>Lonely Kite</i> |
| 21. | Harry Brown | <i>Sword in the Stone</i> |
| 22. | Hayley Butchart | <i>Hop to it</i> |
| 23. | Jodie Davidson | <i>Neurological Weaves</i> |
| 24. | Greg Greenfield | <i>1800 057 590</i> |
| 25. | Victoria Harrower | <i>Nestled</i> |
| 26. | Samantha Hughes | <i>Grow Your Own</i> |
| 27. | Gordon Hymers | <i>Gumbuc 19032013</i> |
| 28. | Sofie Lewis | <i>Flourish on decay</i> |
| 29. | Nina McKay | <i>I dug a hole</i> |
| 30. | Rachael Py | <i>Tiny Builders</i> |
| 31. | Sylvie Riches | <i>Transforming Nature</i> |
| 32. | Katherine Russo | <i>New Growth</i> |
| 33. | Sophie Stockdale | <i>Plastic Life</i> |
| 34. | Jessica Tan | <i>Life after Death</i> |
| 35. | Collette Thomas | <i>Another blue day</i> |
| 36. | Kiara Thomas | <i>Grass is always Greener</i> |
| 37. | Louise Verkuijlen | <i>Doom Valley</i> |

CENTRAL INSTITUTE OF TECHNOLOGY



Third Year

38. Holly Courtney

Nabari

POLYTECHNIC WEST MIDLAND CAMPUS



Andrea Vinkovic *Vortex*

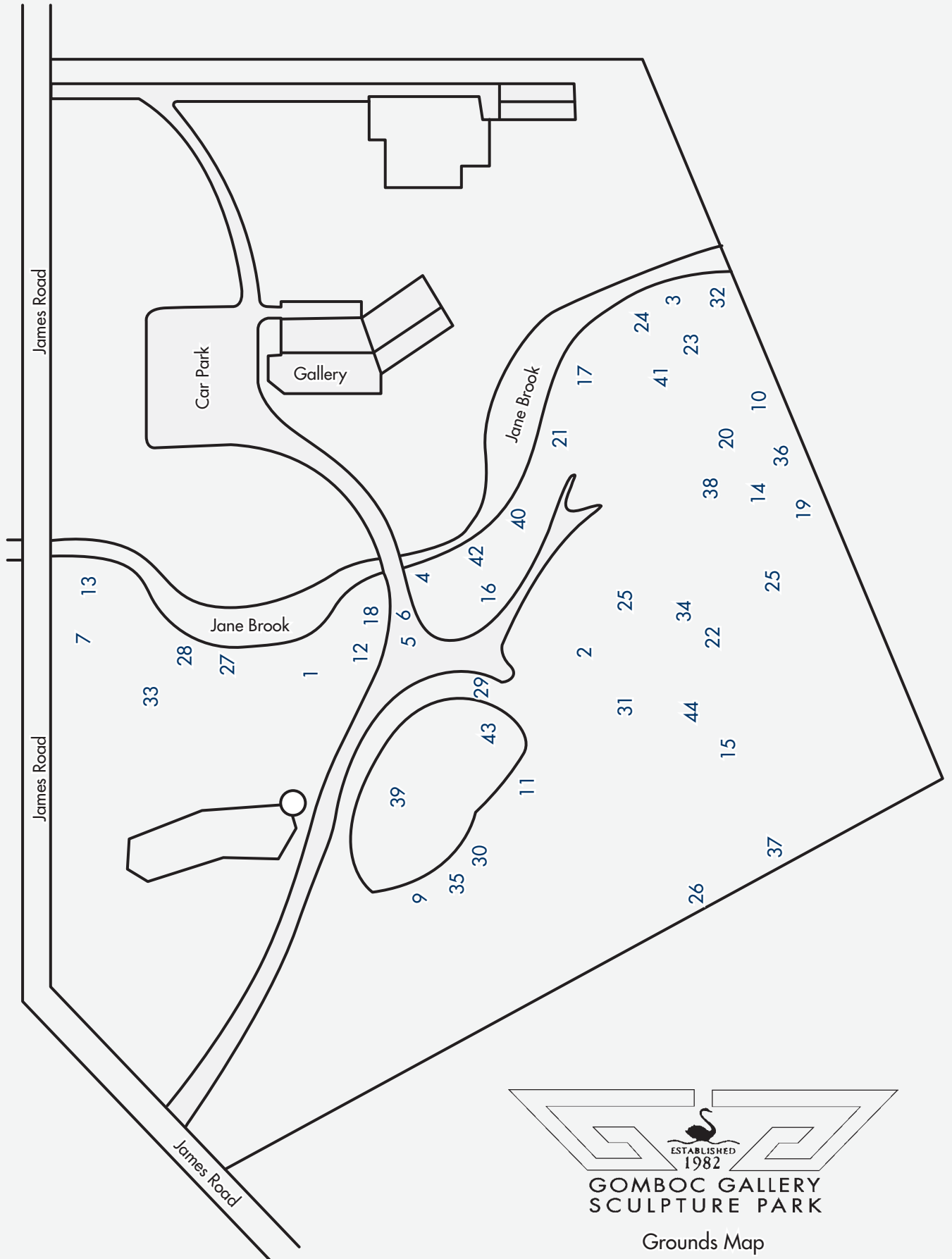


Greg Bish *Autumn Vigil*

Third Year

- 39. Greg Bish
- 40. Jane Button
- 41. Penz
- 42. Emily Smith
- 43. Laura South
- 44. Andrea Vinkovic

- Autumn Vigil*
- Belonging*
- Ignite*
- Cirrina*
- Fall*
- Vortex*



GOMBOC GALLERY
SCULPTURE PARK

Grounds Map

Images from Gomboc Gallery Sculpture Park



Yoshio Nitta



Mitsuo Takeuchi



Ayad Al Qaraghholi



Koichi Ishino



Jean-Pierre Rivas



Koichi Ogino



Phil Spelman



Keld Moseholm



Keizo Ushio



50 James Rd, Middle Swan
Western Australia, 6056

Telephone: (08) 9274 3996

Facsimile: (08) 9274 2665

rm@gomboc-gallery.com.au

www.gomboc-gallery.com.au

Gallery open 10am - 5pm Wednesday to Sunday

Directors: Ron and Terrie Gomboc

PREFERRED PROVIDER FOR THE STATE GOVERNMENT OF WESTERN AUSTRALIA